

# L's Theme B

Yoshihisa Hirano and Hideki Taniuchi

Guitar TAB

3 0 5 0 | 3 0 7 3 | 3 0 5 0 | 3 0 7 3

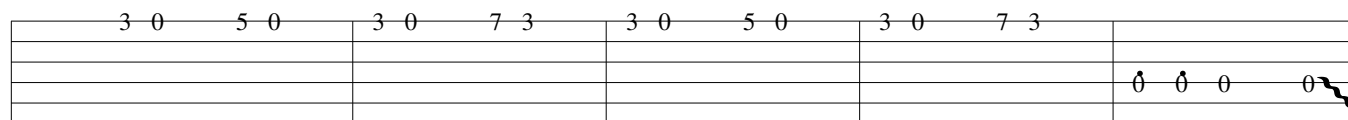
Electric Guitar

*mf*

25

## L's Theme B

Gtr.

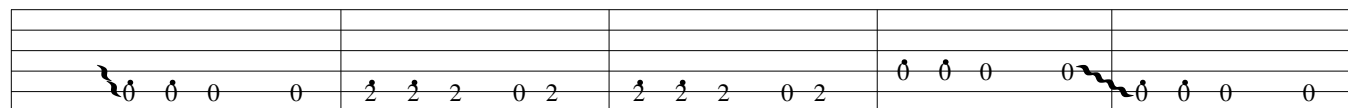


E.Gtr.

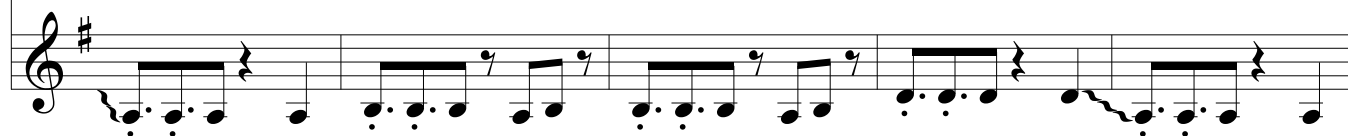


30

Gtr.

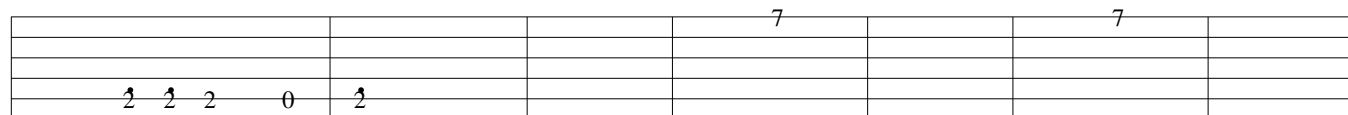


E.Gtr.

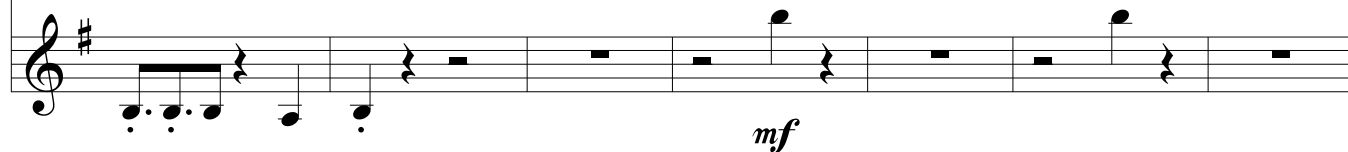


35

Gtr.

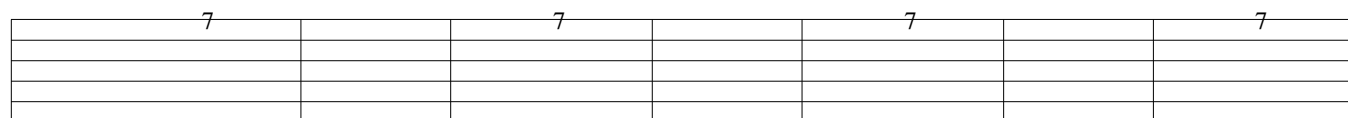


E.Gtr.

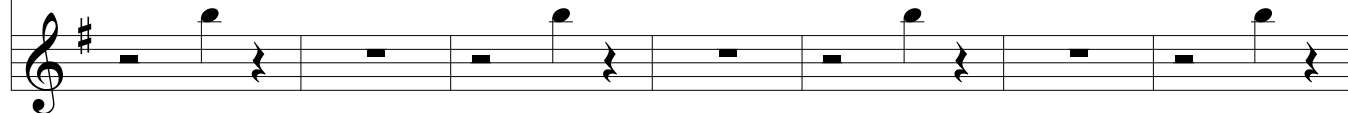


42

Gtr.

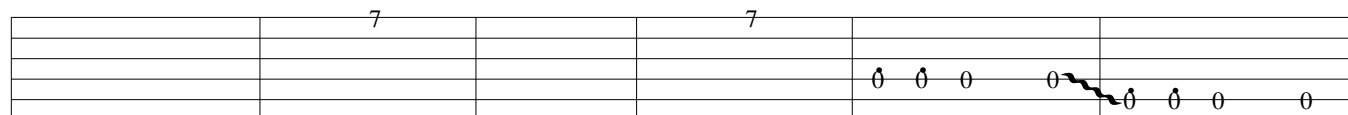


E.Gtr.

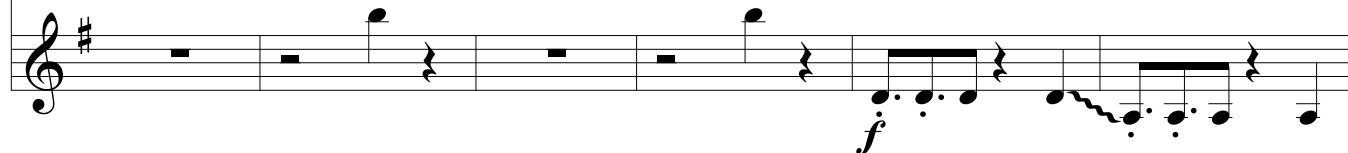


49

Gtr.



E.Gtr.



55

## L's Theme B

3

Gtr.

Diagram of guitar fretboard for measures 55-59. The diagram shows a 6-string guitar with fret numbers indicated by numbers 0-2. Measure 55: Fret 2 on strings 1, 2, 3, 4, 5, 6. Measure 56: Fret 2 on strings 1, 2, 3, 4, 5, 6. Measure 57: Fret 0 on strings 1, 2, 3, 4, 5, 6. Measure 58: Fret 0 on strings 1, 2, 3, 4, 5, 6. Measure 59: Fret 2 on strings 1, 2, 3, 4, 5, 6.

E.Gtr.

Electric guitar staff for measures 55-59. The staff is in treble clef with a key signature of one sharp (F#). The melody consists of eighth and quarter notes, with some measures containing rests. The notes are: 55 (F#4, G#4, A4, B4, C5, D5), 56 (F#4, G#4, A4, B4, C5, D5), 57 (F#4, G#4, A4, B4, C5, D5), 58 (F#4, G#4, A4, B4, C5, D5), 59 (F#4, G#4, A4, B4, C5, D5).

60

Gtr.

Diagram of guitar fretboard for measures 60-64. The diagram shows a 6-string guitar with fret numbers indicated by numbers 0-2. Measure 60: Fret 2 on strings 1, 2, 3, 4, 5, 6. Measure 61: Fret 0 on strings 1, 2, 3, 4, 5, 6. Measure 62: Fret 2 on strings 1, 2, 3, 4, 5, 6. Measure 63: Fret 0 on strings 1, 2, 3, 4, 5, 6. Measure 64: Fret 2 on strings 1, 2, 3, 4, 5, 6.

E.Gtr.

Electric guitar staff for measures 60-64. The staff is in treble clef with a key signature of one sharp (F#). The melody consists of eighth and quarter notes, with some measures containing rests. The notes are: 60 (F#4, G#4, A4, B4, C5, D5), 61 (F#4, G#4, A4, B4, C5, D5), 62 (F#4, G#4, A4, B4, C5, D5), 63 (F#4, G#4, A4, B4, C5, D5), 64 (F#4, G#4, A4, B4, C5, D5).

65

Gtr.

Diagram of guitar fretboard for measures 65-71. The diagram shows a 6-string guitar with fret numbers indicated by numbers 0-2. Measure 65: Fret 7 on strings 1, 2, 3, 4, 5, 6. Measure 66: Fret 7 on strings 1, 2, 3, 4, 5, 6. Measure 67: Fret 7 on strings 1, 2, 3, 4, 5, 6. Measure 68: Fret 7 on strings 1, 2, 3, 4, 5, 6. Measure 69: Fret 7 on strings 1, 2, 3, 4, 5, 6. Measure 70: Fret 7 on strings 1, 2, 3, 4, 5, 6. Measure 71: Fret 7 on strings 1, 2, 3, 4, 5, 6.

E.Gtr.

Electric guitar staff for measures 65-71. The staff is in treble clef with a key signature of one sharp (F#). The melody consists of eighth and quarter notes, with some measures containing rests. The notes are: 65 (F#4, G#4, A4, B4, C5, D5), 66 (F#4, G#4, A4, B4, C5, D5), 67 (F#4, G#4, A4, B4, C5, D5), 68 (F#4, G#4, A4, B4, C5, D5), 69 (F#4, G#4, A4, B4, C5, D5), 70 (F#4, G#4, A4, B4, C5, D5), 71 (F#4, G#4, A4, B4, C5, D5). The dynamic marking *mf* is present below the staff.

72

Gtr.

Diagram of guitar fretboard for measures 72-76. The diagram shows a 6-string guitar with fret numbers indicated by numbers 0-2. Measure 72: Fret 7 on strings 1, 2, 3, 4, 5, 6. Measure 73: Fret 7 on strings 1, 2, 3, 4, 5, 6. Measure 74: Fret 7 on strings 1, 2, 3, 4, 5, 6. Measure 75: Fret 7 on strings 1, 2, 3, 4, 5, 6. Measure 76: Fret 7 on strings 1, 2, 3, 4, 5, 6.

E.Gtr.

Electric guitar staff for measures 72-76. The staff is in treble clef with a key signature of one sharp (F#). The melody consists of eighth and quarter notes, with some measures containing rests. The notes are: 72 (F#4, G#4, A4, B4, C5, D5), 73 (F#4, G#4, A4, B4, C5, D5), 74 (F#4, G#4, A4, B4, C5, D5), 75 (F#4, G#4, A4, B4, C5, D5), 76 (F#4, G#4, A4, B4, C5, D5).